

O F F E R

According to our terms of business we offer as follows, without obligation, subject to prior sale:

1 used blow moulding machine

Manufacturer:	KRUPP-KAUTEX
Type:	KB 25, up to 40 liter volume
Year of construction:	1986
Extruder type:	S 100 / 20d
Extrudersize:	100 / 20d, grooved barrel, HDPE
Extrudermotor:	75 Kw
Heaters:	Extruder: 21 Kw, Head: 15,5 Kw
Control cabinet:	Siemens S 5
Head Type:	Kautex accuhead, 5 Liter, Fifo system
Mould length:	max: 770 mm (by use of spreader unit 570 mm)
Mould width:	max: 710 mm
Mould depth:	2 x 210 mm
Clamping force:	26 tons / Mp
Daylight opening:	min: 400 mm, max: 900 mm (2 x 250mm cylinder stroke)
Electronic parison programmer:	Moog 25 points
Parison length controller:	included in Moog programmer
Parison spreader:	2-finger spreading device
Take out unit:	automatic gripper system

ADDITIONAL INFORMATIONS / EXTRAS:

- **Machine equipped for manufacturing technical parts**
- **Machine is in good condition, frequently maintained**

Price of above described machine, ex works:

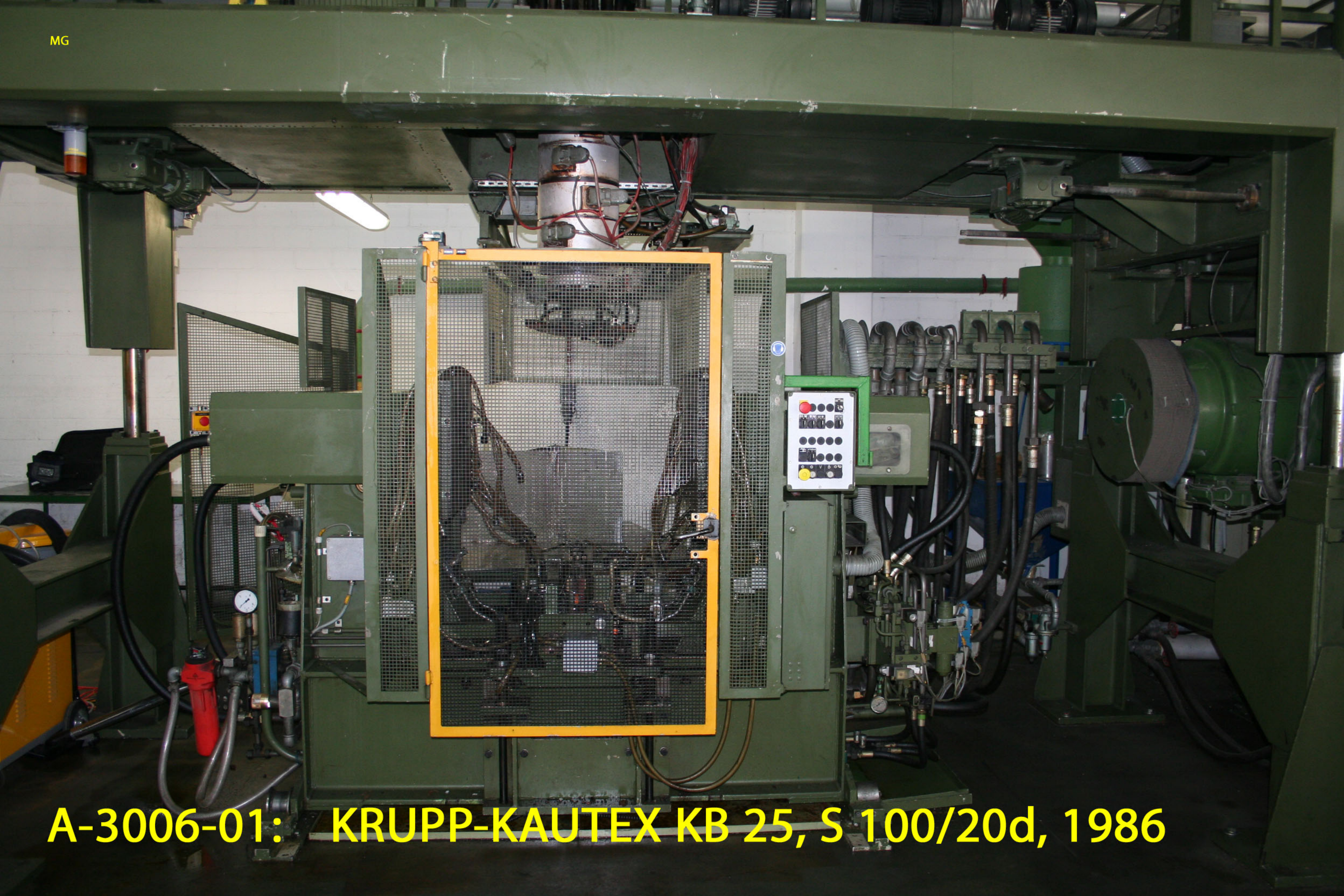
on demand



A-3006-01: KRUPP-KAUTEX KB 25, S 100/20d, 1986

MG

A-3006-01: KRUPP-KAUTEX KB 25, S 100/20d, 1986



MG

A-3006-01: KRUPP-KAUTEX KB 25, S 100/20d, 1986





MG

A-3006-01: KRUPP-KAUTEX KB 25, S 100/20d, 1986

MG

KRUPP

A-3006-01:

KRUPP-KAUTEX KB 25, S 100/20d, 1986

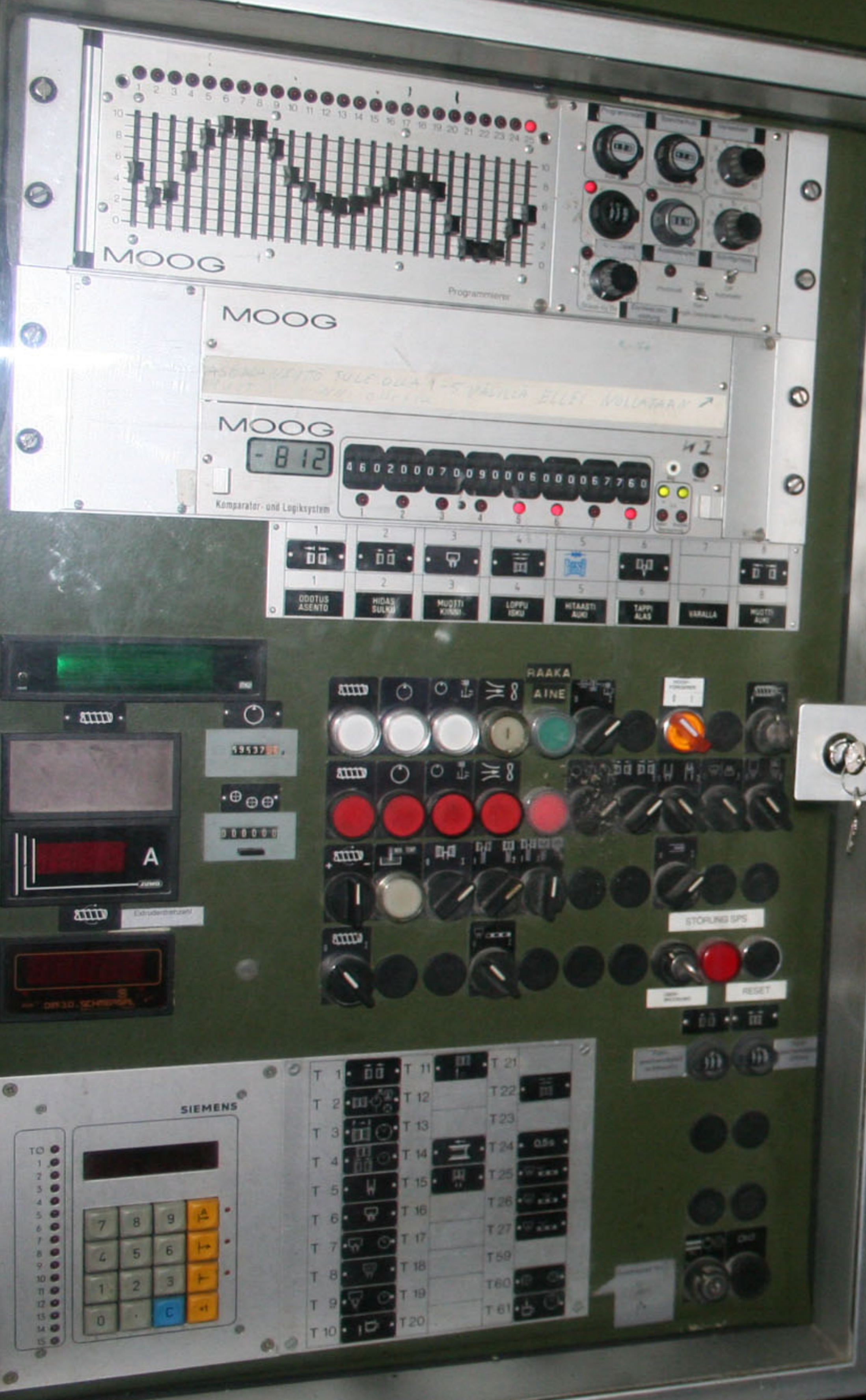
MG

MOOG Programmierer

MOOG Komparator- und Logiksystem

RAAKA AINE

SIEMENS



21A 21A 21A

26A 2A

34°C

194

KRUPP KAUTEX

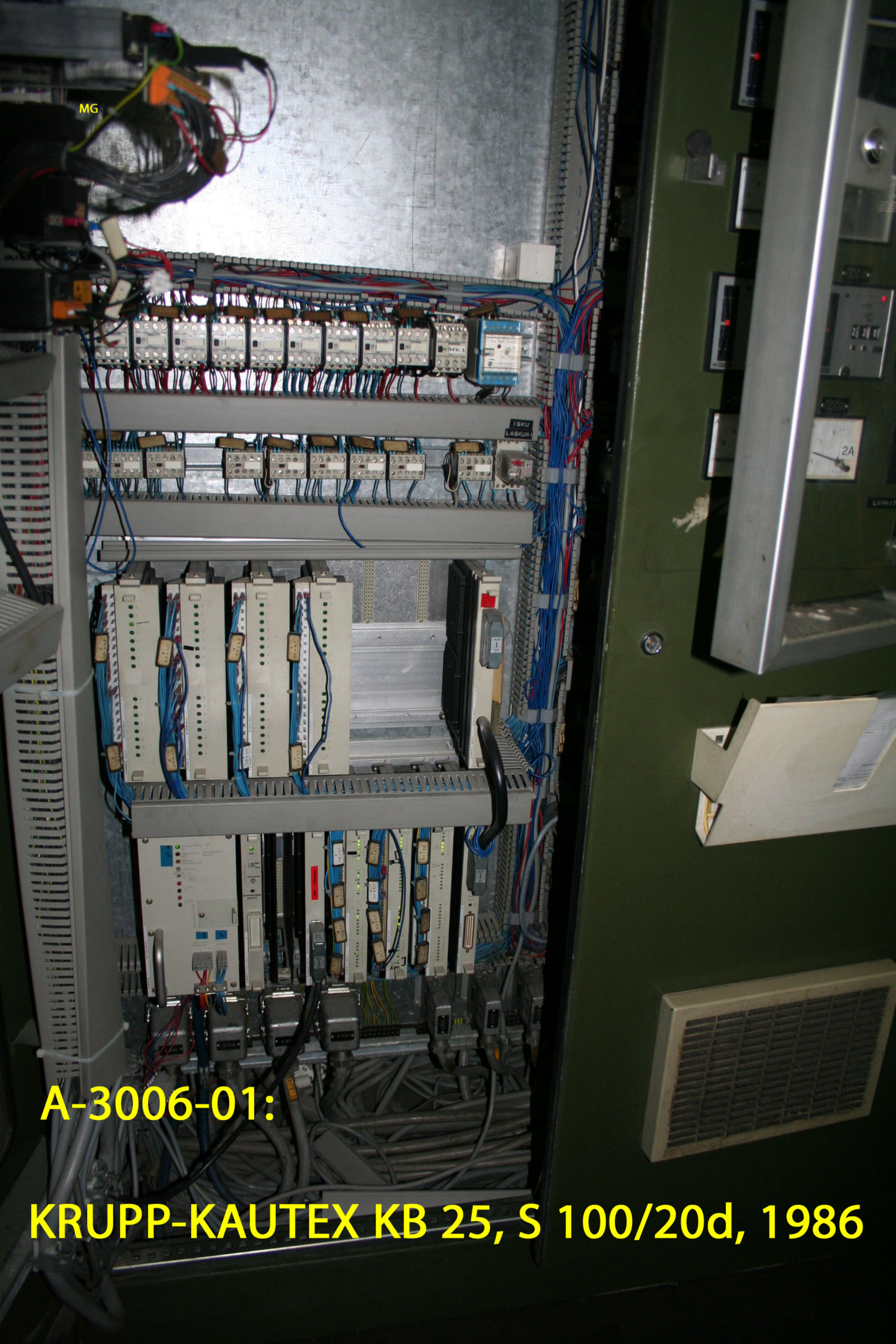
Achtung!
Vor dem Auswechseln
des Hauptschalters
muss die Drucksperre
mit der Druck-Taste
ausgeschaltet werden.

A-3006-01: KRUPP-KAUTEX KB 25, S 100/20d, 1986

MG

A-3006-01:

KRUPP-KAUTEX KB 25, S 100/20d, 1986



KAUTEX VIII

MG

A-3006-01: KRUPP-KAUTEX KB 25, S 100/20d, 1986